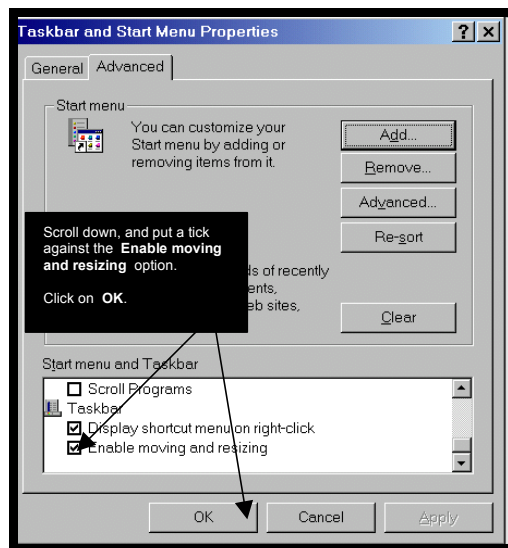


## Internet Explorer opens off-screen in Windows 9x/ME

You open Internet Explorer. It opens maximised, but instead of being maximised in the centre of your screen, part of it is strangely off-screen (as per the screenshot below), and no matter what you do you cannot move the window back to the centre of the screen. If this is your problem, then this document will step you through solving it.

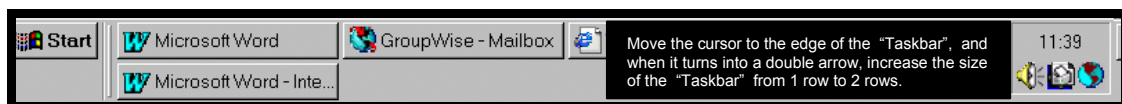


- Open **Internet Explorer** and maximise if it is not already maximised.
- Click on **Start \ Settings \ Taskbar and Start Menu**.
- If there is a tick against the “Auto hide” option, take it off and click on **OK**.
- If you are running **Windows ME**, click on **Start \ Settings \ Taskbar and Start menu**, and position yourself on the **Advanced** tab.  
In the “*Start menu and Taskbar*” box, scroll down and put a tick against the **Enable moving and resizing** option, exactly as shown below :



Click on **OK**.

- Move the mouse cursor to the edge of the "Taskbar", and when it turns into a double-arrow, increase the size of the "Taskbar" from 1 row to **2 rows**, as illustrated below.  
*You should now see "Internet Explorer" reposition itself completely and now maximise itself properly above the 2-rows "Taskbar".*



- Now resize the "Taskbar" back to **1 row**. *You should now see "Internet Explorer" reposition itself again.*
- Close "Internet Explorer" by clicking on the **X** in the top right-hand corner.
- Re-open "Internet Explorer". It should now open properly on your screen, and maximised.
- That's it. You're done.**

ooooooooOOOOOOoooooooo