

## Windows 2000 – Configuring a CD-ROM Drive with future Hardware Upgrades in mind

You install a game on your PC that runs from the CD. Then, you install Microsoft Encarta. Then IBM WorldBook. All, programs that run from your CD-ROM drive, **drive D:**. Then, at some stage many months later, you run out of hard disk space and you have a **second hard disk** installed. What happens next ?

What happens next is that your new second hard disk becomes D:, your CD-ROM drive becomes **drive E:** , and suddenly your games, Encarta, and WorldBook no longer work. Disaster. You have to re-install them all. And you do not even know how to, because, possibly, someone else installed the original software for you.

This happens time and time again, and we have had so many distressed AnswersThatWork users wondering what to do that we decided to produce this simple guideline document to help users protect themselves against future upgrades of their PCs.

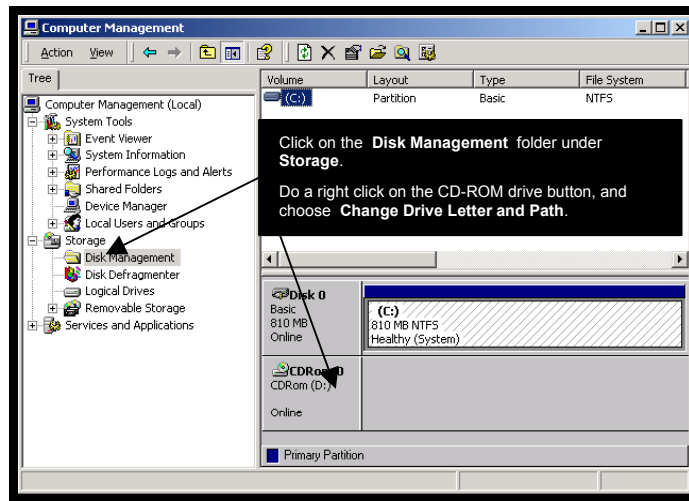
### Changing the CD-ROM Drives letter

*The above scenario occurs solely because over 90% of PCs come configured with the **CD-ROM drive installed as drive D:**. This is incredibly short-sighted, even in these days of large hard disks (10Gb or more) as it basically means that as soon as you decide to upgrade your hard disk capacity through the addition of a second hard disk, your CD-ROM drive will have its drive letter changed as a result of the second hard disk taking over the letter D: .*

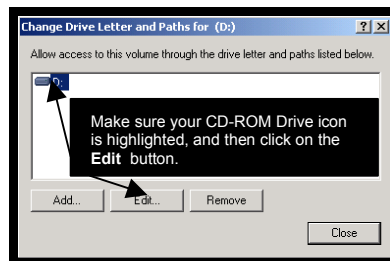
*At **AnswersThatWork**, as standard practice, we always configure CD-ROM drives a "few letters away" from the last hard disk letter. So, for instance, if at "birth" a PC's last hard disk is, say, drive G:, then we would configure the CD-ROM drive to occupy K or higher, thus allowing us to add new hard disks to the PC without the CD-ROM drive's letter being changed as a result. So, to protect yourself against future hardware upgrades :*

- Close all programs.
- Click on **Start \ Settings \ Control Panel \ Administrative Tools \ Computer Management**.

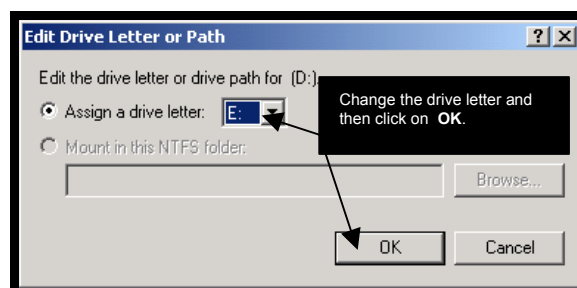
- ❑ Click on the **Disk Management** folder under **Storage**, as shown below.



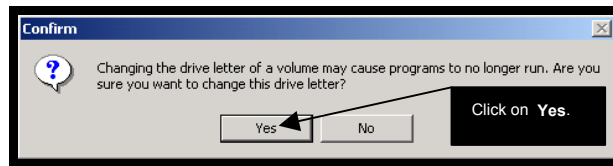
- ❑ Do a right click on the CD-ROM drive and select **Change Drive Letter and Path**.
- ❑ In the "**Change Drive Letter and Path...**" dialogue box, click on your CD-ROM drive icon so that it appears highlighted, and then click on the **Edit** button.



- ❑ Change the drive letter, and then click the **OK** button.



- When you are prompted to confirm the letter change, click on **Yes**.



- You can now safely install **CD based** software on your PC knowing that you are “insured” against drive letter re-assignments if you install a second hard disk later on in the life of your PC.
  
- That’s it, you’re done.

ooooooooOOOOOOoooooooo