

Configuring Windows 2000 Explorer to behave as in Windows 95/98

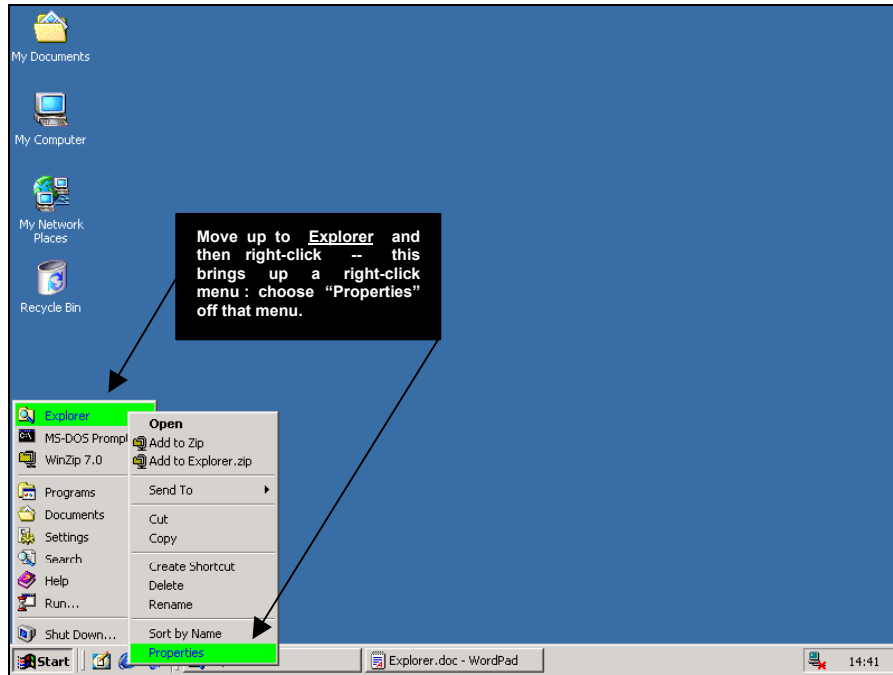
How typical. You get used to Explorer (Windows Explorer) always opening onto your C: drive in Windows 95, Windows 98, and Windows NT; you get used to a standard, and then Windows 2000 comes along, you install it with excitement and anticipation, immediately open Explorer and “What the hell is this !-~%\$£***!!” Yes, you suddenly find that Windows 2000’s Explorer now opens onto the **My Documents** folder, straight off the desktop !

It takes some getting used to, in fact most users whom Windows 2000 is aimed at never get used to it for it is effectively introducing a beginner level feature in a professional environment that is aimed squarely at the Advanced user. It is not only ridiculous but it also quickly becomes frustrating as you endlessly find yourself opening Explorer, and then wasting time drilling down to your C: drive to do **real work**.

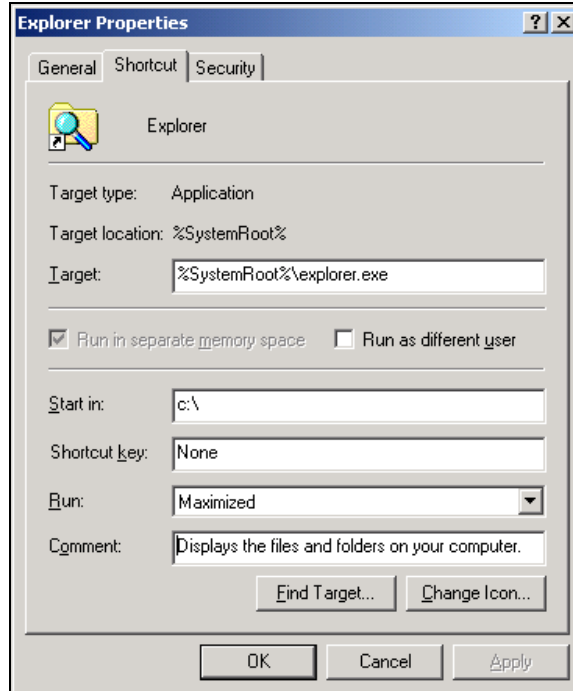
If you too find this behaviour frustrating, and would like to configure **Windows 2000 Explorer** to behave like its Windows 95/98/NT older brothers, do as follows :

Re-configuring Win2000 Explorer

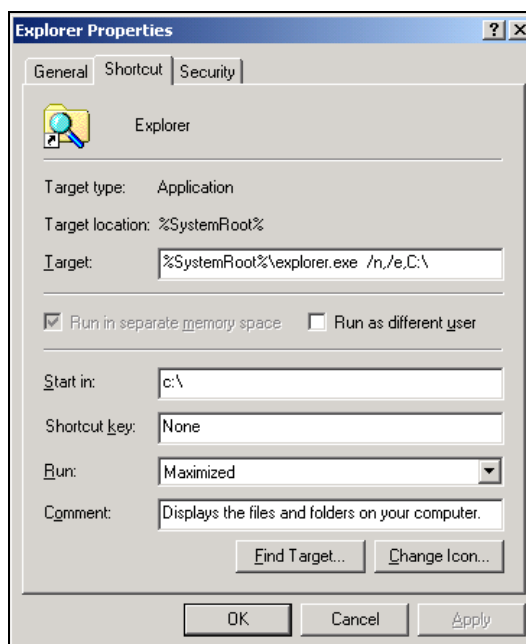
- Login to Windows 2000 as **Administrator** (to avoid unnecessary problems).
- Click on **Start** and move up (and possibly across) to the Windows Explorer menu option.
- When positioned on the option, right-click. This brings up a secondary contextual menu.
- Choose **Properties** on that menu, as shown below (in the example below we have placed Windows Explorer onto our Start Menu and renamed it “Explorer” - in your case it may still be called “Windows Explorer” and placed under Start \ Programs) :



- The Properties sheet for Windows Explorer will come up. Click on the Shortcut tab at the top, and you should get the window below :



- Move to the **Target** field and add “ **/n,/e,C:**” at the end of it so that it looks as shown below :



- Click **OK**.
- **You're done.** From now on Explorer will always open onto your C: drive, à la Windows 95/98/NT.

Explanation of the changes

- /e** : This switch starts Explorer in the **dual-pane** mode, with the drives and folders in the left pane, and the contents of the drive/folder highlighted on the left, showing in the right pane - ie. The usual Explorer view. *Without this switch Explorer will open as one, un-split, window.*
- /n** : This switch starts a **new** Explorer screen regardless of whether you already have Explorer opened or not. *Without this switch, if you already have Explorer opened, Windows switches to it and re-positions it onto your C: drive – it does not open a new Explorer screen.*

C: : This specifies that you want Explorer to open onto your C: drive. You can change this to virtually any folder you like, e.g. F:, H:. *If you want to open it onto a subfolder whose name includes spaces then enclose the whole of the folder name inside quotes, e.g. /n,/e,"C:\Program Files".*

ooooooooOOOOOOoooooooo