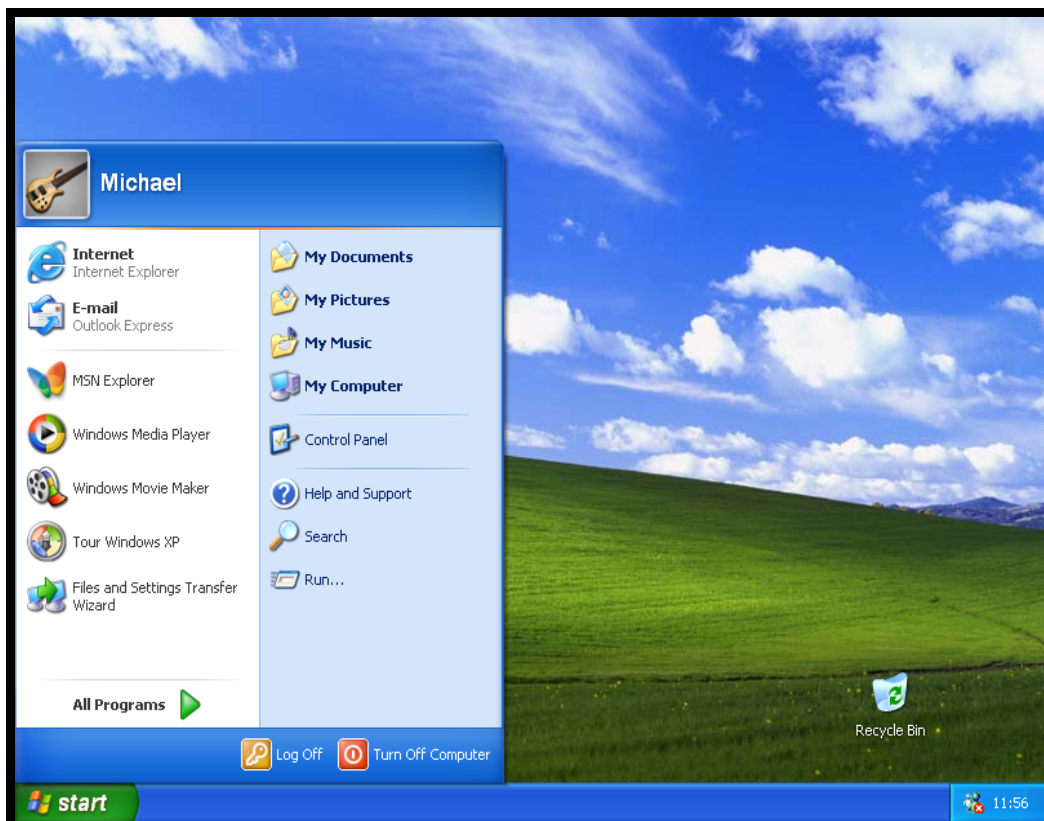


## Configuring Windows XP Home Edition with the Classical Look

If you have just upgraded to **Windows XP Home Edition**, or if you have just bought a new PC/Laptop that has **Windows XP Home Edition** pre loaded, you will have noticed that the 'default' Windows XP interface is very different to the interface of previous Windows operating systems, i.e. Windows 95/98/ME/.

Whilst some users like the new 'Windows XP Home Edition' interface, most proficient users used to using Windows 95/98/ME, will prefer the classical look. If this is your case, this document will step you through configuring Windows XP with the 'classic' interface, as opposed to the new default 'Windows XP Home Edition' interface.

### The Windows XP Home Edition interface

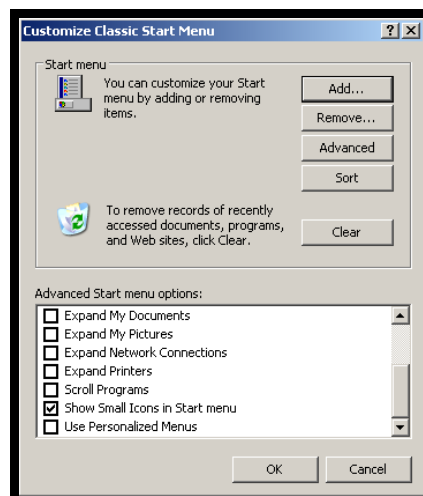


## Configuring the Start menu

- Do a **right-click** on the **Taskbar**, and select **Properties**.
- Position yourself on the **Start Menu** tab.
- Select **Classic Start Menu**.



- Click on the **Customise** button.
- Put a tick against the **Show Small Icons in Start Menu** option.
- Take the tick OFF the **Use Personalised Menus** option.

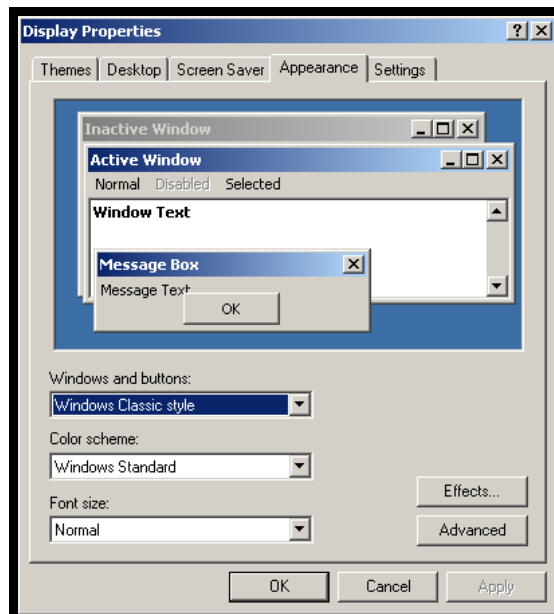


- Click on **OK**.
- Back at the "Taskbar and Start menu Properties" dialogue box, click on **OK**.
- Click on **Start** (to bring up the **Start menu**).
- Do a **right-click** anywhere on the **Start menu**, and select **Sort by Name**.

## Configuring the Desktop

*Many of you will like Windows XP's green Start button and rounded menus. If you are such a person, then ignore this section; otherwise follow the instructions below to make the appearance of your desktop look exactly like Windows 95/98/ME.*

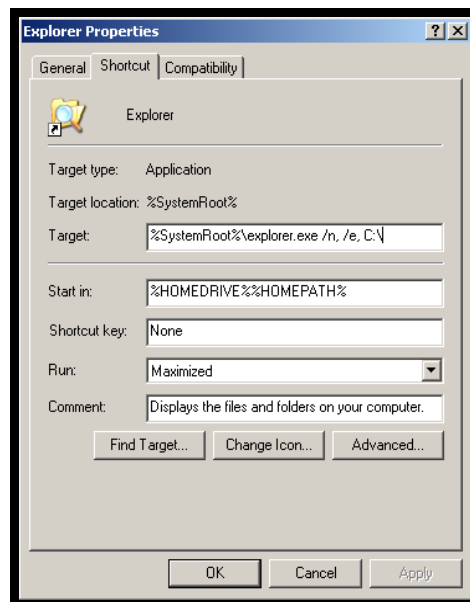
- Do a **right-click** on the **Desktop**, and select **Properties**.
- Position yourself on the **Appearance** tab.
- In the "Windows and buttons" drop-down box, select **Windows Classic Style**, as shown below.



- Click on **OK**.

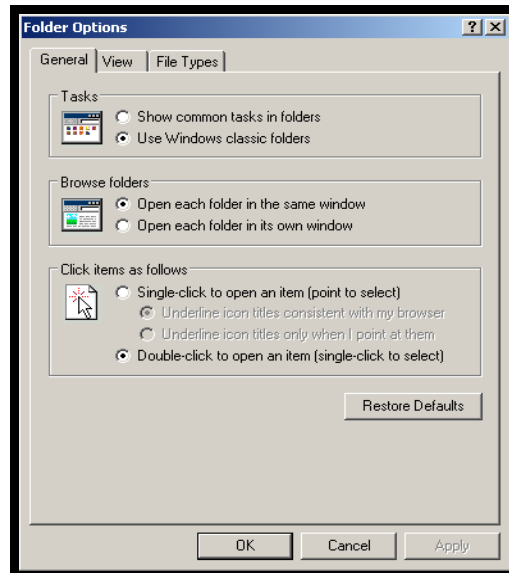
## Configuring Explorer

- Click on **Start \ Programs \ Accessories**.
- Do a **right-click** on **Windows Explorer** and select **Properties**.
- Position yourself on the **Shortcut** tab.
- In the **Run** box, select **Maximised**.
- In the **Target** box, after "...explorer.exe", as shown below, add **/n, /e, C:\**.  
When you add **/n, /e, c:\** to the end of the target line, when you open Explorer, it opens with the 'C: drive' expanded (all of the folders underneath the C: drive on view), as with Windows 95.



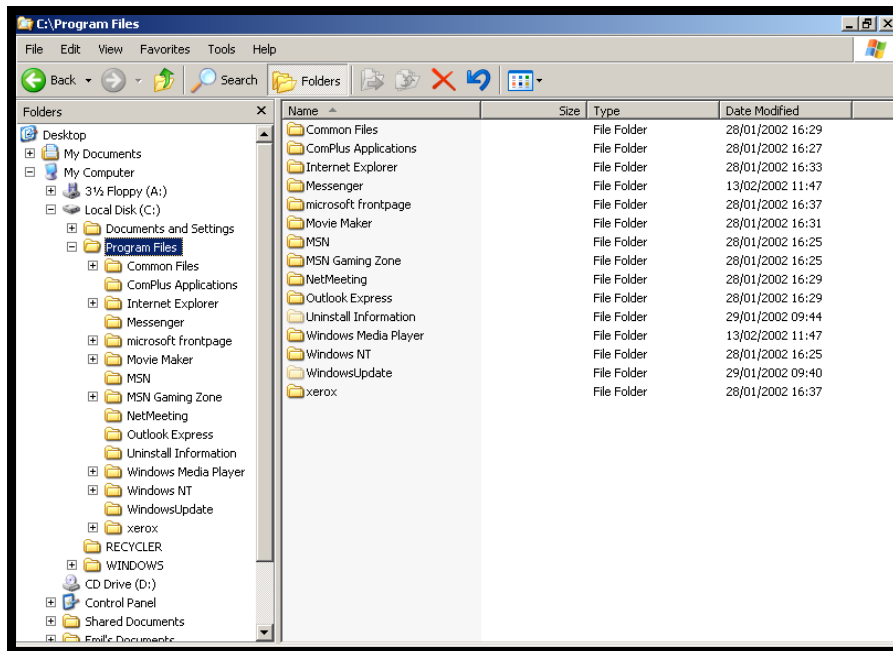
- Click on **OK**.
- If you want to add the **Windows Explorer** icon to your **Start menu**, or any other icon for that matter, click on the icon in question, and 'drag and drop' it onto the **Start** button.
- At the same time, if you want to rename an icon, i.e. you may want to rename "Windows Explorer" to "Explorer", or "Command Prompt" to "MS-DOS Prompt" etc., etc., do a **right-click** on the icon in question, and select **Rename**. Enter the new name in the **New Name** box, and click on **OK**.

- Open **Windows Explorer**.
- Click on **Tools \ Folder Options**.
- Position yourself on the **General** tab, and configure it as follows :



- Position yourself on the **View** tab.
- The options on this screen are a matter of personal preference. However, we do recommend...
  - Under **Files and Folders**, put a tick against **Display the full path in the title bar**.
  - Under **Hidden files and folders**, take the tick OFF against **Hide extensions for known file types**.
- Click on **OK**.
- Back at the main "Explorer" screen, click on **View \ Details**.
- Click on **Tools \ Folder Options**, and position yourself on the **View** tab.
- Click on **Apply to All Folders**, and when you are prompted with the "Folder Views" dialogue box, click on **Yes**.
- Click on **OK**.

☐ “Explorer” should now look as follows :



☐ That's it. You're done.

ooooooooOOOOOOoooooooo