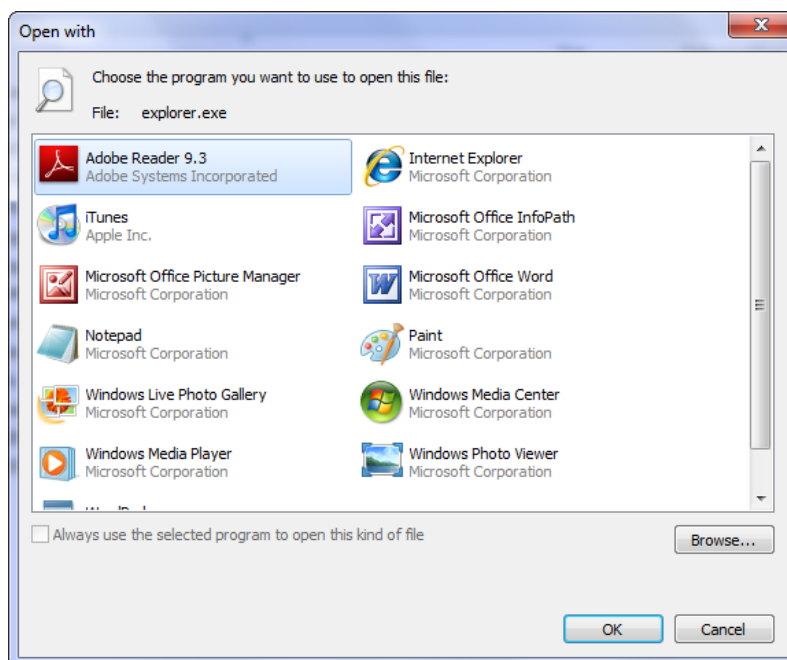


## Start Windows Explorer in the C: drive in Windows 7 (rather than onto “Libraries”)

### When to use this document

You have just installed Windows 7 for the first time, or you have just upgraded to it, and you want to make sure that Windows Explorer always opens on your C: drive rather than on Desktop or Documents, or you want it to open on a very specific folder every time (on most Windows 7 PCs, Windows Explorer opens onto **Libraries** by default).

You knew how to do that in Windows XP and Windows Vista (by modifying the Command Line Switches for Windows Explorer) but it does not work in Win 7, all you get is an **Open File** dialog like this one :

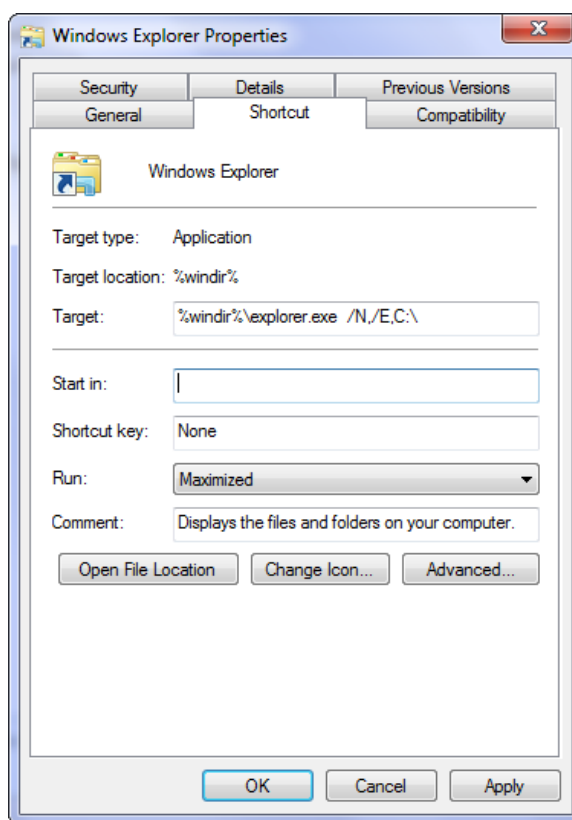


### The Solution

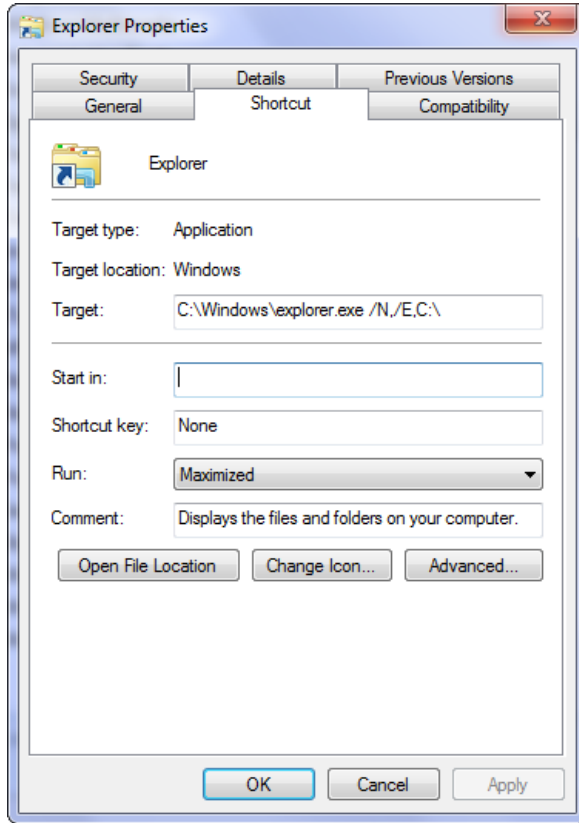
The problem happens because there is a bug in Windows 7 if you add Command Line Switches to the default startup command of Windows Explorer.

The Solution to fix this is very simple – you simply need to replace the **%windir%** variable in the Target command line with the exact path of Windows Explorer : **“C:\Windows”** on most Win7 PCs.

So, instead of adding the **“/N,/E,C:\”** command line switches as below :



Instead make the changes exactly as shown in the following screenshot :



**And ..... that's it !** From now on, in the example above Windows Explorer will always open onto the C: drive

**You're done !**

ooooooooOoooooooooooooooo