

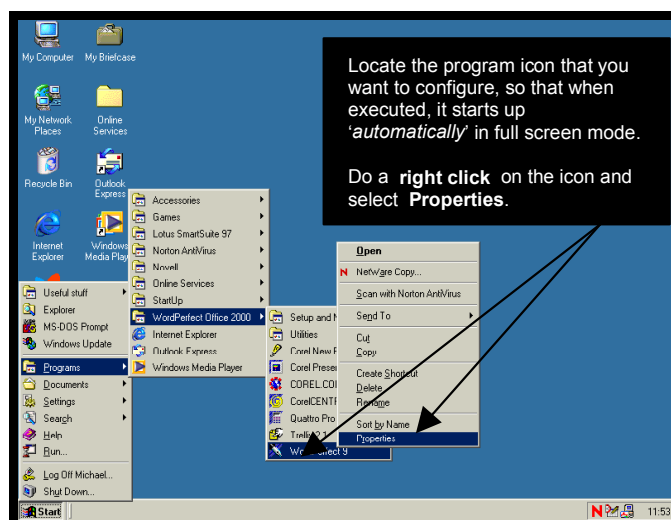
Making a program always start up in full screen mode

Most end-users like to work in **full-screen** mode, ie. with the program they are currently using, maximised. Some programs retain the screen settings you had the last time you used them - thus, if you maximised the program the last time you used it, it will open in full-screen mode the next time you use it. Other programs, however, do not retain the settings and always open in a non-maximised state, with the end-user needing to maximise the program every single time they use it. *This is frustrating.*

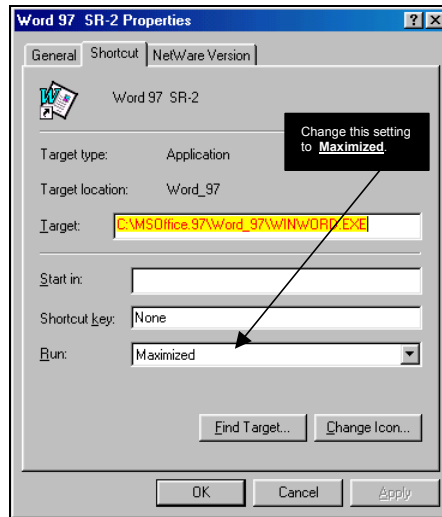
This document will step you through configuring a program so that, when executed, it will **always** start up in **full-screen** mode.

Windows 98/ME/2000/XP/2003

- Click on **Start \ Programs**.
- Locate the program icon that you want to configure.
- Right-click** on that program icon.
- Select **“Properties”** on the right-click menu that comes up.



- ☐ Locate the “**Run**” field in the bottom half of the Properties dialogue box that comes up, and set it to **Maximized**, as illustrated below :

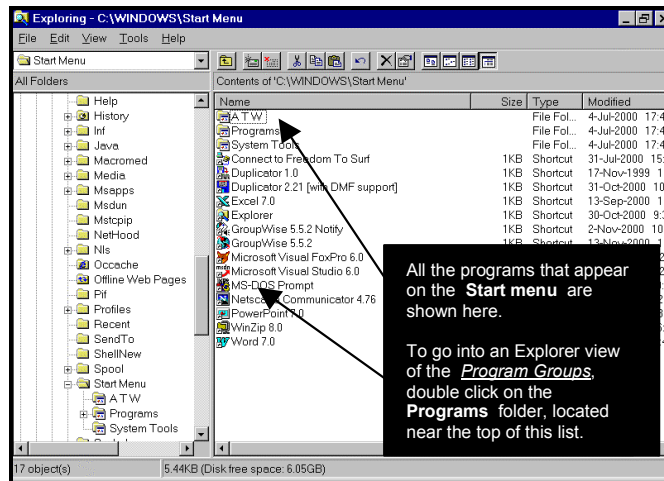


- ☐ Click on **OK**.
- ☐ **You're done.** From now on, every time you start this program it will open in *full-screen* mode.

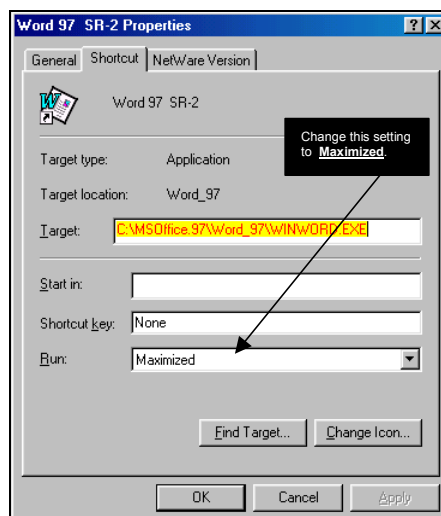
{Note : with a few "badly written" programs, this will not work and you will still have to manually maximize the program every single time that you use it !}

Windows 95 only

- ☐ **Right-click** on the **START** button.
- ☐ Select **Explore** on the right-click menu that comes up. Windows Explorer will now open and show you on the right-hand side the contents of your Start Menu, as shown below :



- Locate, in the right pane, the program icon that you want to configure.
If the program icon in question is not on the Start menu, but is in a Program Group, locate the **Programs** folder (at the top, on the right-hand side) and double-click on it. Your Explorer view will now change to a view of the Program Groups. Double-click on the relevant Program Group until you find the program icon that you want to change.
- Right-click** on that program icon.
- Select **“Properties”** on the right-click menu that comes up.
- Position yourself on the **Shortcut** tab.
- Locate the **“Run”** field in the bottom half of the Properties dialogue box that comes up, and set it to **Maximized**, as illustrated below :



- Click on **OK**.
- Close **Windows Explorer**.
- You're done.** From now on, every time you start this program it will open in *full-screen* mode.

{Note : with a few "badly written" programs, this will not work and you will still have to manually maximize the program every single time that you use it !}

ooooooooOOOOOOoooooooo