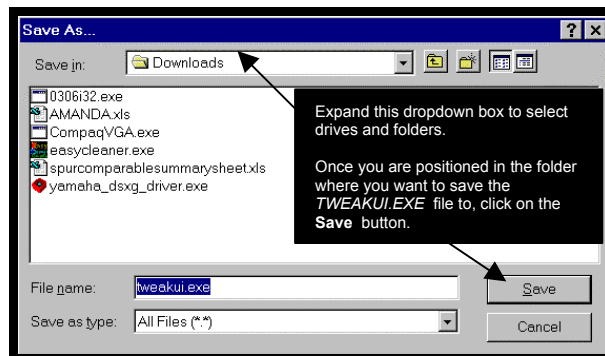


Installing TweakUI 1.33

*TweakUI is a free utility from Microsoft which is so useful it should really be incorporated as part of **Windows 95/98/ME**. TweakUI enables you to customise your PC in a way that is otherwise only possible by Technically Advanced Users through the Windows Registry. It also combines some of the most useful features of the Windows Control Panel, in one small utility program. A must.*

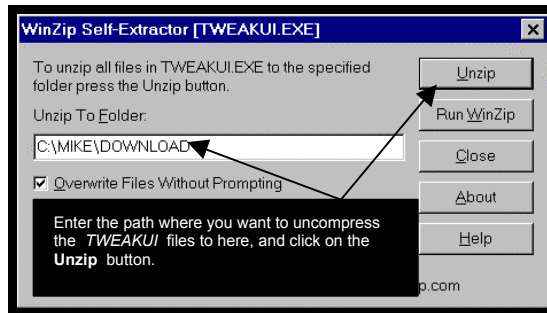
Installing TweakUI 1.33

- Connect to the internet, and make your way to...
www.AnswersThatWork.com
Libraries of Answers That Work
Downright Useful Downloads
- Scroll down, and click on the following link : **TweakUI v1.33 (Microsoft)**.
- Click on the “**Save File**” button, and use the Save As dialogue box to save the *TWEAKUI.EXE* file to your PC (as shown below) :



- Once you have saved the *TWEAKUI.EXE* file to your PC, log out of the Internet altogether.
- Close any applications that are currently open.
- Go into **Windows Explorer**.

- Position yourself in the folder where you just saved *TWEAKUI.EXE*.
- Double-click** on *TWEAKUI.EXE*.
- You are now prompted with the WinZip Self-Extractor dialogue box. Use this dialogue box to uncompress the TWEAKUI files :



- You will now be prompted with a dialogue box stating that the files unzipped successfully. Click on **OK**.
- Close the WinZip Self-Extractor dialogue box by clicking on the **X** in the top right hand corner.
- Back in **Windows Explorer**, position yourself in the folder where you have just uncompressed the *TWEAKUI* files to.
- Do a **right-click** on the *TWEAKUI.INF* file, and select **Install**.
- If you are prompted for the *TWEAKUI.CNT* file, use the **Browse** button to position yourself in the same folder (for some reason the TWEAKUI installation does not always realise that it is already positioned in the right folder), and click on **OK**.
- When a box labelled **About TweakUI...** appears on screen, close it by clicking on the **X** in the top right hand corner.
- The installation will now continue and will complete.
- That's it. Next, go into the **Control Panel** (**Start \ Settings \ Control Panel**), you will find a new icon, the *TWEAKUI* icon.
- You're done.

ooooooooOooooooooo